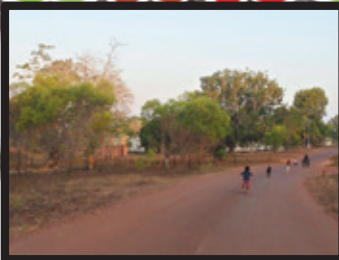


DENTAL ALUMNI NEWSLETTER

ISSUE No 22 2015

BOH STUDENTS IN THE NORTHERN TERRITORY



AS HEALTH PRACTITIONERS WE HAVE WELL-BEING THROUGH ITS RECONCILIATION
A SPECIAL RESPONSIBILITY TO CON- ACTION PLAN BY EMBEDDING CONTENT TO
SIDER THE ISSUES FOR RURAL AND REMOTE ENHANCE THE UNDERSTANDING AND RESPECT
COMMUNITIES IN ACHIEVING ORAL HEALTH FOR ABORIGINAL AND TORRES STRAIT ISLANDER
AND WORK TOWARD REDUCING BARRIERS, CULTURES IN OUR CURRICULA. WE CONSIDER IT
PARTICULARLY FOR INDIGENOUS COMMUNITIES. IMPORTANT TO GENERATE AN ABILITY IN OUR
THE MELBOURNE DENTAL SCHOOL HAS MADE GRADUATES TO PROVIDE CULTURALLY SAFE
A COMMITMENT TO INDIGENOUS HEALTH AND

Continued page 2

BOH STUDENTS IN THE NORTHERN TERRITORY

...Continued from front page

and sensitive health care through the development of enabling relationships with Indigenous communities, and by improving higher educational and employment opportunities in our School.

As part of the Bachelor of Oral Health curriculum, students undertake a research project with a public health focus designed to extend their skills in one aspect of oral health therapy practice. Since 2008, in partnership with Oral Health Services NT, Melbourne Dental School Bachelor of Oral Health students have undertaken placements in Darwin and the Top End working as clinicians and in oral health promotion with support and mentoring from experienced dental and oral health therapists providing school dental services. This program offers rich experience to the students, adds capacity for Oral Health Services Northern Territory and works toward addressing recruitment issues in remote communities. Beginning in 2015, we have been fortunate to have the financial support for this program through the establishment of the Trollplast Bachelor of Oral Health Indigenous Travel scholarship. Having Indigenous education and health determinants embedded throughout the Bachelor of Oral Health course gives students a strong foundation when they travel to Darwin and then into remote communities.

RESEARCH ON TOOTH BRUSHING PROGRAMS IN SCHOOLS

In 2015, the BOH students, in partnership with Oral Health Services Northern Territory, have undertaken a research project as part of their placement program to evaluate school based tooth brushing programs in the NT. School based tooth brushing programs have been seen as one mechanism for improving

access to fluorides and establishing good oral health practices among children and have been incorporated into the delivery of School Dental Services in the NT to rural and remote communities. Both the NT Oral Health Promotion Plan and the Northern Territory Curriculum Framework includes this strategy.

The implementation and support for school tooth brushing programs is undertaken by Oral Health Services NT staff as part of their service delivery model during their scheduled outreach service visits. There is anecdotal evidence that implementation and sustainability of these programs is inconsistent over the period

Since 2008, in partnership with Oral Health Services NT, Melbourne Dental School Bachelor of Oral Health students have undertaken placements in Darwin and the Top End working as clinicians and in oral health promotion.

between visits. The aim of the study is to evaluate the processes and perceived value of tooth brushing programs in rural and remote NT primary schools from the perspective of school teachers involved in their delivery. The students have conducted semi-structured interviews with school teachers to collect data to evaluate the processes for supporting and delivering them and to identify the barriers,

motivators and enablers for sustainability in schools.

The findings of this study will contribute to the ability of Oral Health Services NT to develop ways in which this program can be encouraged and sustained in order to enable the oral health literacy of the children participating in the programs and contribute to reductions in caries experiences for these remote dwelling children. Preliminary findings have shown that crowded curricula and multiple demands on teachers' time in small and remote communities offer challenges to sustainability of these programs and that supply and storage of toothbrushes can be problematic. The study findings will be presented at the BOH Research Presentation Day on October 22, 2015 at the School.

STUDENT PERSPECTIVES

REAGA YOUSIF (BOH 2015)

Travelling to the Northern Territory opened my eyes to the diverse dental needs of different groups of people in various geographical locations. My clinical experience in Darwin, Katherine, Jilkminggan and Mataranka, under the supervision of experienced and talented Dental Therapists and Oral Health Therapists was an invaluable experience. A memorable learning experience for me during one of my school placements was working with a young Indigenous girl who had profound dental phobia and hypomineralization present on her 6-year-old molars with post-eruptive breakdown, successfully working towards the completion of a restoration under local anaesthetic, quite a feat for this child. I was also able to travel to some rural and remote communities to collect qualitative data related to a research project I am undertaking with three other students. Drawing on my own cultural heritage originating in the villages of North Iraq, it was a humbling experience to see such small communities located in what seemed like the middle of nowhere, thriving around the school as a central hub of learning and living. This experience has enriched my studies by affording me the opportunity to undertake a formal ethics application, develop my research and clinical skills, apply theory to practice and form bonds with colleagues' interstate, all whilst building my independence. More importantly, this experience has ignited my passion for Oral Health during my final year of study.



ABOVE LEFT: Mallery McDonald with Kylie Innes at a clinic in Waruwi, a remote community on the South Goulburn Islands.

ABOVE RIGHT: Des Murray Scholarship 2015 recipient, Russell Lamb.

WARRUWI REFLECTION - MALLORY MCDONALD

As part of my third year research project, I was lucky enough to participate in a three-week clinical placement in the Northern Territory. During my time, I was given the opportunity to accompany Kylie Innes (an experienced dental therapist) to Waruwi, a remote community on the South Goulburn Islands, to treat school-aged children and assist in the local schools' tooth brushing program.

During my time at Waruwi, I was exposed to a clinical setting that I have never experienced before, one in which at any moment there can any number of patients lined up waiting to see you, many of whom require complex treatment. After each busy day, I would

leave the clinic exhausted, but with anticipation and excitement to go back the next day. I was challenged each day with new cases that I had not come across before and my clinical skills quickly developed. I was supported both by my mentor and her dental assistant, who trusted in me and encouraged me for each and every patient I saw.

This opportunity was an incredible experience and has been the highlight of my University years. I loved my time in Waruwi and was sad to say goodbye at the end of our trip. I learned a great deal within such a short period of time and am so grateful for the opportunity to have visited the community and treated in a remote setting.

EMMA CUBIS (BOH 2013)

...describes her time in the Northern Territory as eye opening.

'My time there proved first hand how the social determinants of health affect oral health and the way services are able to be provided,' she said. Isolation and access to nutritious food, dental hygiene products, expert care and reliable access to resources such as water and electricity all contribute to poorer oral health''.

'I think about it often in my daily practice,' said Lauren Bylart who spent three weeks in Darwin, Gove and Tiwi Islands in 2013. 'It taught me to look at the bigger picture surrounding our patients and not just at the immediate oral environment. There is so much more to patient care that just treating the disease present.'



NATIONAL RURAL HEALTH ALLIANCE MURRAY SCHOLARSHIP 2015

The Des Murray Scholarship was established by the National Rural Health Alliance (NRHA) in 2000 to recognise Des Murray's major contribution to rural and remote community health and his work at Commonwealth level in the development and administration of rural health policies in Australia. The Scholarship is awarded every second year to enable a young person from a more remote area to attend the National Rural Health Conference. In 2015 the Scholarship, covering the cost of registration, airfare and accommodation for the 13th National Rural Health Conference in Darwin, 24-27 May was awarded to Bachelor of Oral Health 3rd year student Russell Lamb. Russell grew up in rural and remote communities and has demonstrated a commitment to improving the health status of people in his region and the ability to be an advocate for the young people of his region. During 2015 as part of his final year research subject, he has also been part of the team undertaking the research project and clinical work with NT Oral Health. The Melbourne Dental School congratulates Russell on this award. **D**

By Associate Professor Julie Satur

CELEBRATION TO HONOUR Professor Eric Reynolds' 16 Years

A FUNCTION TO CELEBRATE PROFESSOR ERIC REYNOLDS' 16 YEAR TERM AS HEAD OF THE MELBOURNE DENTAL SCHOOL WAS HELD AT UNIVERSITY HOUSE AND ATTENDED BY OVER 100 FRIENDS AND COLLEAGUES, INCLUDING THE DEAN OF THE FACULTY OF MEDICINE, DENTISTRY AND HEALTH SCIENCES, PROFESSOR STEPHEN SMITH, WHO GAVE THE OPENING ADDRESS AS FOLLOWS:

"Professor Reynolds is a Melbourne Laureate Professor and was also Associate Dean of the Faculty of Medicine, Dentistry and Health Sciences of the University of Melbourne. He has been the Head of the Melbourne Dental School (and prior to that, the School of Dental Science) for 16 years. His tenure represents the longest of any head of School and is by any measure simply an outstanding achievement.

His accomplishments in other spheres are no less exceptional and include his current position as CEO and Director of Research of the Oral Health CRC at The University of Melbourne and Head of the Oral Biology Section of the Melbourne Dental School.

He has been researching and teaching for over 30 years on the aetiology and prevention of oral diseases. He has 255 scientific publications and 22 patents on a wide range of technologies.

Since 1996 Eric has attracted \$96.7 million in research funds from the CRC program, NH&MRC, ARC, NIH and industry. He has used these funds to develop technologies that have been licensed by the University of Melbourne to a number of companies and are now in products sold in over 50 countries worldwide.

Professor Reynolds is on the Editorial Board for the Australian Dental Journal and has also been a member of the Editorial Board for the Journal of Dental Research, the publication of the American Association for Dental Research.

Eric has received numerous awards and distinctions with the most significant being the Clunies Ross National Science and Technology

Award in 2002 to recognize the successful application of science and technology and the Victoria Prize in 2005 which is awarded to an individual whose scientific discovery or technological innovation has significantly advanced the State of Victoria.

In 2005 he was appointed an Officer of the Order of Australia (AO) for service to community dental health and to dental education. In 2011 he received the Distinguished Scientist Award from the International Association for Dental Research and in 2015 he was awarded the Leach Medal at the Lorne 40th International Meeting on Protein Structure and Function.

Eric has driven the School's research agenda and reputation forward to bring it to the lofty heights that it has attained: ranked number 1 in Australia and from independent benchmarking the only University of Melbourne School to be equivalent or better than its counterpart at Harvard University. Also the Melbourne school is the only dental school in Australia to secure the highest possible rating of 5 in its 'Field of

Research' in both 2010 and 2012 ERA exercises. None of these things can be achieved without the commitment of individual academics and the support of our professional staff, and work which is developed over a sustained period of time, however it takes an effective Head of School to ensure that the necessary environment is available to facilitate such excellent levels of productivity. Eric has consistently gone to great lengths to do this, be it through the day to day responsibilities of HR management and strategic workforce planning, through to delivering efficiencies which mean that more time and money is freed up to support the funding of positions and infrastructure to enhance research productivity.

Eric's personal research productivity is remarkable given his commitments as Head of School, and we're delighted to see that he'll have plenty to occupy himself with following his stepping down as Head of School with his responsibilities in the Oral Health CRC and his success with NHMRC grants in the recent grant rounds.

Eric has been a planner and instigator of new ventures – The Oral Health CRC of which he was

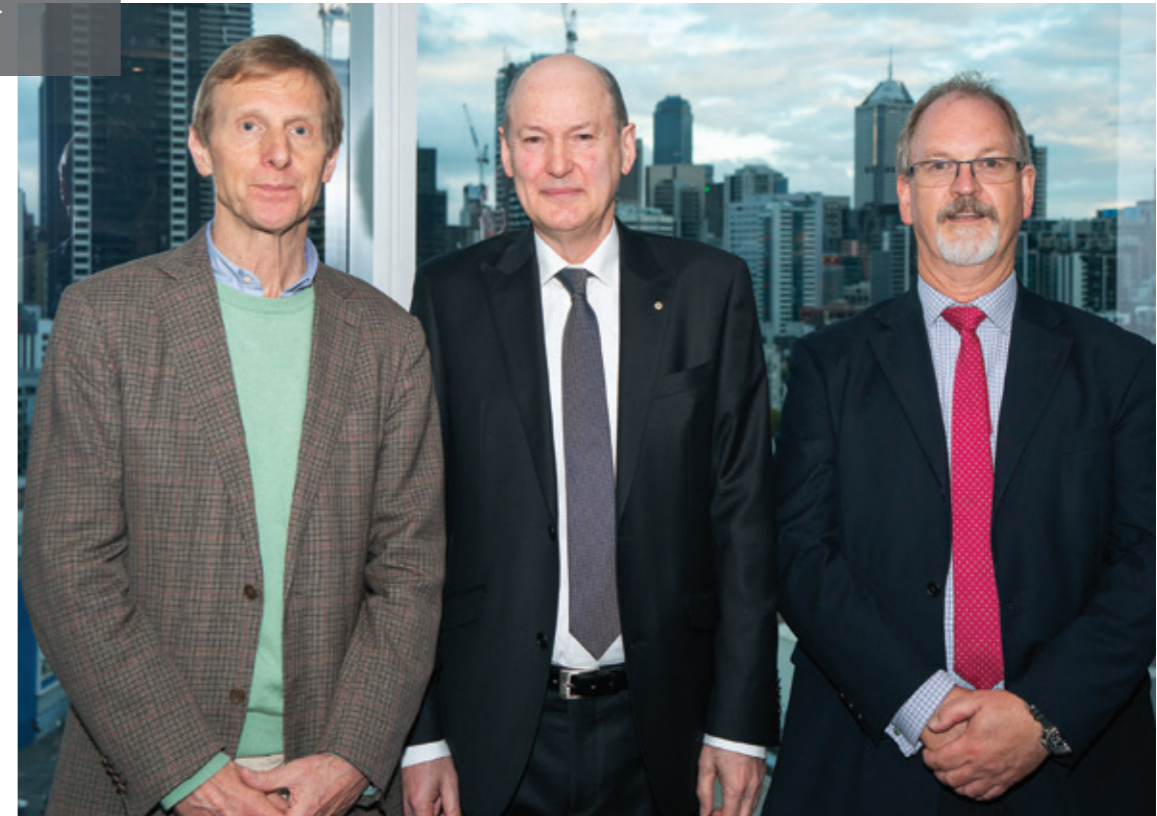
the principal architect and since 1996 Eric has attracted \$96.7 million in research funds from the CRC program, NH&MRC, ARC, NIH and industry. He has used these funds to develop technologies that have been licensed by the University of Melbourne to a number of companies and are now in products sold in over 50 countries worldwide. His vision to improve dental education through the establishment of the Melbourne Dental Clinic has paid dividends in terms of clinical experience for the future dental workforce. The Melbourne Dental Clinic places the Melbourne Dental School ahead of any of its competitors in the country for the opportunities provided to the BOH, DDS and the dental specialties. The MDC is now becoming a part of the dental landscape and is establishing itself as a significant oral health care provider in Victoria.

Last but not least, it's fair to say that Eric is highly regarded as an excellent citizen of both the Faculty and the University. He has served on committees and working groups across the Faculty and University, despite his extensive commitments in



RIGHT: Professor Eric Reynolds receiving the Leach Award.

RIGHT BELOW: l-r, Professor Stephen Smith, Professor Eric Reynolds, Professor Mike Morgan.



the area of teaching, research and school administration.

I think I can speak on behalf of all of us here in the Faculty, as well as the Senior Leadership in the University, by saying that Eric has fulfilled the role of Head of School admirably, serving both his School and the wider University with dedication and esteem. This is not a gathering to mark your retirement Eric – far from it. It is to recognize your contribution as Head of School over 16 years. We certainly will miss your contributions as Head of School. But we look forward to your continuing contributions in research, engagement and teaching which will augment your exceptional legacy, developed over your years as Head. We know that you will take advantage of some more time to be able to focus on these activities

which we know you to be passionate about which will no doubt continue to enhance significantly the reputation of the Faculty and University" .D

*By Professor Stephen K Smith
Dean, Faculty of Medicine, Dentistry
and Health Sciences*

GOOD FRIDAY APPEAL 2015

Teddy Bear Hospital

ON FRIDAY APRIL 3, 2015, 800 MEDICAL AND ALLIED HEALTH VOLUNTEERS FROM THE UNIVERSITY OF MELBOURNE PARTICIPATED IN THE GOOD FRIDAY APPEAL TEDDY BEAR HOSPITAL IN SUPPORT OF THE ROYAL CHILDREN'S HOSPITAL. THIS YEAR WAS THE SECOND YEAR TO INCLUDE DENTISTRY IN THE ALLIED HEALTH AREA WITH FOUR COMMITTEE MEMBERS AND OVER 30 STUDENT VOLUNTEERS FROM THE DOCTOR OF DENTAL SURGERY COHORTS PARTICIPATING ON THE DAY.

More than three thousand children attended the event and over \$14,000 was raised for the Royal Children's Hospital making this year's Teddy Bear Hospital the most successful yet.

The Teddy Bear Hospital is an educational program organised and run by student volunteers, aiming to familiarise children with the healthcare environment using the child's teddy bear as the patient. The emphasis is on fun and upbeat interactions designed to promote future positive behaviour in medical, dental and allied health settings whilst encouraging the children and their parents to learn about healthy body behaviours. This programme is also an invaluable resource for the healthcare students as they can successfully engage and interact with paediatric patients and their parents or guardians in a low-risk environment.

Four dental committee members, Sarah Roath, Emma Marshall, Shreyas Suryanarayan and Jacinta Traeger, worked in the months leading up to the event to plan and create a range of dental activities designed to engage and educate children and parents alike. The dental contingent built on last year's successful 'dental debut', and it is with many thanks to The Australian Dental Association Victorian Branch for their kind donation which covered the costs of printing and materials for the station activities.

The ADAVB donation allowed the Doctor of Dental Surgery students to significantly increase the size of the dental station, the number of volunteer numbers and to provide a larger range of educational activities for the children (and their teddies!).

There were four activities available in the Teddy Bear Dental Surgery – an oral hygiene and safety station, a nutrition station and a teddy dental clinic. The oral hygiene activity allowed students to demonstrate proper plaque removal techniques as well as activities promoting the use of mouthguards, explaining trauma management and estimating dental age. The nutrition station proved to be very popular, surprising both children and parents alike by informing them of the high sugar content of chocolate milk and other drinks. The Teddy Dental Surgery was by far the most popular station as it allowed children to don examination gloves and a surgical gown so they could give

This educational program organised and run by student volunteers, aims to familiarise children with the healthcare environment.

their teddy a comprehensive oral examination.

Two groups of dental student volunteers – with pockets full of stickers, lots of enthusiasm and smiles – worked tirelessly to provide cheerful, informative and age-appropriate experiences for children. Information was

also freely given to parents accompanied by children and teddies. Feedback for the Teddy Bear Dental Surgery was unequivocally positive, with parents, visiting MDS lecturers and

hospital management remarking that our students were bright, engaged and well-presented.

It is the hope of this year's committee that the Melbourne Dental School cohort will continue to be able to continue to participate in this volunteer

experience with the medical and allied health teams in educating students and families alike. We anticipate that the future activities for the Teddy Bear Surgery will include information on thumb-sucking and early intervention orthodontics and we also look to extend the volunteering opportunities the Bachelor of Oral Health students.

The committee members would like to sincerely thank ADAVB for their kind donation and Ms Julie Owen for her encouragement and support.

COMMITTEE MEMBERS:

Sarah Roath, Emma Marshall, Shreyas Suryanarayan and Jacinta Traeger.

DENTAL VOLUNTEERS:

Aditya Athale, Cat Amato, Simra Azher, Annem Chaudhry, Dana Chamma, Ara Cho, Dulani Hakmana, Safinah Hambali, Annie Huang, Elly Huang, Joseph Huang, Sally Huynh, Safina Jetha, Melissa Jong, Simran Joshi, Kaya Kapusta, Sarah Kim, Anastasia Kurniawan, Ni Fung Lay, Velanni Martins, Michelle Mun, Pavithra Nantheeswarar, Claire Shephard, Vicky Tan, Alan Tran, Regina Tunru, Mikika Vajpayee, Grace Valenzuela, Tint Won, Ven Woo, Roseanne Yew,



: From the Head :

WOULD LIKE TO BEGIN BY ENDORSING THE WORDS IN THIS EDITION WHICH PAY TRIBUTE TO THE TREMENDOUS IMPACT THAT LAUREATE PROFESSOR ERIC REYNOLDS HAS HAD ON THE MELBOURNE DENTAL SCHOOL OVER HIS SIXTEEN YEARS AS LEADER, DIRECTOR AND VISIONARY.

To give his influence some context, during these years, he has overseen the graduation of over 1400 BDS/DDS/BOH graduates and many dozens of DCD specialists and research higher degree graduates. Most of our School staff have known no other Head of School and all of us have benefited from his keen interest in our collective welfare. Eric has been instrumental in shaping the education of our graduates, the careers of our staff and the internationally recognised research outcomes which have made our School the envy of any in Australia and many in the world.

Clearly such a record is somewhat daunting for an incoming Head of School! I can do no more than declare my intention to build on Eric's outstanding legacy and with the support of the School, our alumni and the broader profession, take dental education and research at The University of Melbourne on its established upward trajectory. I am very pleased (not to mention relieved) to add that Eric is not leaving us. He will concentrate on expanding his world class research within the School and Co-operative Research Centre: a responsibility for which we are all very grateful.

While of course I know many of you (having taught more than a few during your undergraduate/postgraduate years), for those who don't know me, I offer a little of my background. Dentistry seems to be "in my blood" with two dentists in the family (Grandfather and Uncle) as well as a New Zealand School Dental Nurse (Mother). To add to the lineage, my father produced dental amalgam – developing a company established by his father. The Dominion Gold Supply furnished dental alloy to most New Zealand dentists and

many of those in Australia, from the 1920s well into the 1980s. During many school holidays, my siblings and I were employed as (very) cheap labour to weigh out amalgam that many still have in their mouths. Graduating last century (1979) from Otago University, I arrived in Australia after a year of working in the Otago School. I completed a MDS in Children's and Preventive Dentistry and then left for what was intended to be a 'world tour', prematurely truncated in Hong Kong where I was employed by Hong Kong University in Public Dental Health. Returning with my family to Melbourne in the late 80s, I began as a lecturer in Community Dentistry and subsequently completed a PhD under the mentorship of Professor Clive Wright, a previous Dean and Head of School. I have remained in the vicinity since that time, albeit with short sojourns elsewhere, and delightedly call Australia home.

This segues to a theme that I believe is crucial for our School's ongoing success - Alumni relations and connections to our School. There is absolutely no doubt that the support of our profession (alumni or no) is at the core of our history and essential for our future. The School is interested in giving back where we can. As an example, we have a support structure both within the School and in the wider Faculty that can help organise and assist with year/class reunions or similar. Continuing Professional Development is another focus where the School will be working with the profession to find mutually beneficial outcomes. If you have ideas or see value in involving the School in particular Alumni initiatives, we would be extremely keen to hear from you. The coming editions of Dent-AI will continue to report on the many activities of the School and University – some of which you may feel you are able to participate in, or contribute to, at an opportune time.

Finally, I would like to thank the many people over the recent months who offered me their good wishes and congratulations. I look forward to a period of growth and close cooperation with you all. **D**

*Professor Mike Morgan
Head and Chair of Population Oral Health
Melbourne Dental School*



PICTURED CLOCKWISE FROM TOP LEFT: the Teddy Dental Surgery; Committee Members 1-r, Sarah Roath, Shreyas Suryanarayan, Emma Marshall and Jacinta Traeger; All the Volunteers.

Honours, Awards & Staff News

❖ **CONGRATULATIONS TO PROFESSOR MIKE MORGAN** on his appointment as Head of the Melbourne Dental School. Professor Morgan holds the Chair of Population Oral Health at The Melbourne Dental School, The University of Melbourne and has been Acting Head of School since January 2015. He has been involved in dental education and research both in Australia and internationally. Graduating with a dental degree from The University of Otago, Mike is a registered specialist dentist with a Masters' degree and PhD gained from The University of Melbourne in the areas of dental public health and epidemiology. He is a Program Leader in the Oral Health CRC based at the Melbourne Dental School, The University of Melbourne. Professor Morgan's principal teaching responsibility is in population oral health, focusing on oral disease causation in relation to common risk factors and disease prevention at a population level - with an emphasis on community water fluoridation. He has a strong research background and interest in the causes and prevention of oral disease, economic evaluation and clinical trials of dental caries preventive agents. Currently appointed to the Board of VicHealth, he is President of the Australian Dental Council Board of Governors. Mike also chairs the Health Professions Accreditation Councils' Forum, representing all entities appointed under the National Registration and Accreditation Scheme to accredit health profession education programs in Australia.

This is an excellent appointment and recognises Mike's work in research and teaching, and his leadership roles within the dental profession. This role also acknowledges the leadership that Mike has provided to the Dental School and contributed to the Faculty particularly since the beginning of this year

while in the role as Acting Head of MDS..

❖ **CONGRATULATIONS TO THE STAFF INVOLVED IN THE MELBOURNE DENTAL SCHOOL'S INDIGENOUS ORAL HEALTH PLACEMENT PROGRAM**, winner of this year's Award for Excellence in Indigenous Higher Education. Led by A/Prof Menaka Abuzar in collaboration with the Rural Health Academic Centre and Goulburn Valley Health, non-Indigenous dental students are placed in outreach clinics in the Rumbalara Aboriginal Oral Health Centre as a way of fostering culturally safe clinician-patient relationships and encouraging graduates to provide much needed oral health care to Indigenous communities. It is great to see the innovation and excellence of our teaching programs recognised.

❖ **A/PROF MINA BORROMEO** was awarded the David White Award for Teaching Excellence. Mina is the convenor of the Special Needs programme and has worked with the Potter Museum to enhance the student experience and is considered outside the teaching programme in Dentistry.

❖ **DR WARREN CROSSLEY** has been appointed as a Lecturer in Oral and Maxillofacial Surgery.



FAREWELL TO STAFF
A function was held at University House to farewell staff members who have recently left the School as a result of the University's Business Improvement Program.

The School has also farewelled Annette Bird, Colin Turner and other staff members, Lam Giang, Julie Schumann and Diana Zeppieri will be leaving in the second half of the year.

PICTURED ABOVE l-r: Elizabeth Nelson, Kim Hanson, Alan Eddy, Brenda Jackson, Eric Reynolds, Hong Doan, Rosie Pingitore, Mike Morgan, Louise Murray, Dennis Rowler.

2015 QUEEN'S BIRTHDAY HONOURS

❖ **DR BRUCE G H DRYSDALE** AOM (BDS Sc 1949). For service to dentistry and to the community. The announcement of the award was almost on the eve of Dr Drysdale celebrating his 90th birthday.

❖ **DR ANTHONY DICKINSON** OAM (BDS Sc 1979). For service to dentistry as a practitioner and as an educator in prosthodontics and to professional associations.

❖ **PROFESSOR FREDERICK CLIVE WRIGHT**, AM. Past Dean and Head of the School of Dental Science at The University of Melbourne. For significant service to dentistry, particularly in the area of population oral health, as an academic, educator, administrator and research scientist.

❖ **PROFESSOR PAUL ABBOTT**, AO. Former member of staff. For distinguished service to clinical dentistry and to higher education, as an academic, researcher and author, to endodontics as a practitioner and to professional organisations.

Student News

❖ **DR ANDREW MCKENZIE** 3rd year DCLinDent (Orthodontics) student received the Australian Society of Orthodontists' Foundation for Research and Education Merit Award for his poster presentation at the National Meeting in Hobart in March 2015.

❖ **VISIT TO UNIVERSITY OF MICHIGAN** BY DR ARJUN ATRESH, 2nd Year Doctor of Clinical Dentistry (Orthodontics)

The orthodontic research fund at The University of Melbourne, largely supported by the Stanley Jacobs Orthodontic Trust Fund, recently sponsored Dr Arjun Atresh to travel to the United States and spend three weeks at the Orthodontic Department of the University of Michigan in Ann Arbor. The reason for the trip was to learn and become competent in a method of data analysis that is essential for analysing the data set collected as part of my DCD research thesis related to three-dimensional image analysis in orthodontics.

The Orthodontic department at the University of Michigan has a rich history and is world-renowned, with specific emphasis on clinical research regarding the analysis of three-dimensional x-rays taken before and after orthodontic treatment to investigate treatment effects. They have a dedicated imaging laboratory, run by Assistant Professor Lucia Cevidanes, who is an authority in this field with over 60 publications in peer-reviewed orthodontic literature and is on the review board of the American Journal of Orthodontics.

Continued over

There are several other full-time academic staff and visiting scholars, as the department has significant research funding towards several projects, many of which are large multi-centre international studies.

The imaging laboratory is state of the art and my time spent there was invaluable. I achieved my goals of three-dimensional data analysis, which will enable me to complete my DCD thesis to a high standard, as well as apply to publish these findings in peer-reviewed orthodontic literature. This will enhance our department's reputation both nationally and internationally, which will aid in securing research grants and funding in the future. My travel strengthened the connection between the University of Melbourne and the University of Michigan, which could result in future collaborations benefitting both departments. I am also able to share my knowledge with my colleagues at the University of Melbourne, which will add to the quality of education that we receive.

I feel very privileged and grateful to have been given the opportunity to travel as part of my DCD thesis, and would not have been able to do so without the support of Associate Professor Paul Schneider and the generous philanthropy of donors to the Orthodontic research fund at the University of Melbourne, in particular the Stanley Jacobs Ortho Trust Fund. My visit and collaboration have undoubtedly enhanced my education as an orthodontic post-graduate student, and I will do as much as I can to pass my experience and knowledge to the rest of the department.

I would strongly support this initiative for a future student, if appropriate.



Oral Health CRC team at PgLondon2015.

CONFERENCE NEWS

Oral Bug on World Stage

The oral pathogen *Porphyromonas gingivalis* now has its own conference. PgLondon2015 took place in June this year, bringing together scientists from around the world who are investigating the health impacts of this increasingly infamous bacterium.

Porphyromonas gingivalis is recognised as a 'ring leader' in establishing chronic periodontal disease. It is also associated with a range of systemic diseases including cardiovascular disease and inflammatory diseases.

Researchers in the Oral Health CRC, based at the Melbourne Dental School, are currently working with Sanofi Pasteur and CSL Limited on an immune based therapy targeting *Porphyromonas gingivalis* for the treatment of chronic periodontitis.

Melbourne Laureate Professor Eric Reynolds AO is CEO of the Oral Health CRC and was a co-convenor of the London conference, alongside Koji Nakayama from Nagasaki University and Mike Curtis from the Queen Mary University

of London. His presentation at the conference outlined the promising findings of his research group in inducing an immune response against *P. gingivalis* and significantly reducing inflammation and alveolar bone loss.

Associate Professor Neil O'Brien-Simpson, also from the Oral Health CRC, spoke at the conference on the development of a saliva-based chairside diagnostic for the early detection of *P. gingivalis*.

Professor Eric Reynolds and the Melbourne Dental School will host the next international *Porphyromonas gingivalis* conference, to be held in Melbourne in May 2017.



MELBOURNE DENTAL SCHOOL

Nathan Cochrane Scholarship

Dr Nathan Cochrane was a remarkable young dental academic who achieved so much in such a short period of time. His achievements were simply outstanding given his age. There is little doubt that Dr Cochrane was to be a future leader of the dental profession. His contributions to the dental

profession and community were impressive and these were acknowledged by the numerous awards and prizes he received prior to his untimely death in 2013.

The Melbourne Dental School is inviting donations to establish the Nathan Cochrane Scholarship to honour and commemorate an outstanding young dental academic.

The Scholarship will be used to financially support a postgraduate student enrolled in the Melbourne Dental School in a program involving research into Orthodontics and/or Cariology.

Please send donations made payable to "The University of Melbourne" with a covering letter addressed to:

Professor EC Reynolds
Melbourne Dental School
The University of Melbourne
720 Swanston Street
Victoria 3010.

Please state in the covering letter that the funds are to be used by the Melbourne Dental School to establish a Nathan Cochrane Scholarship Trust to fund a scholarship for a postgraduate student enrolled in a program involving research into Orthodontics and/or Cariology.

Vale Ian Steele and Robert Garton



DR IAN STEELE
21 JANUARY 1943 – 23 DECEMBER 2014

Dr Ian Steele, a dear friend and colleague at The Royal Dental Hospital of Melbourne has fought a good fight and passed away on 23 December 2014 with family by his side.

Dental Health Services Victoria is grateful to Dr Steele for his wonderful contribution to Victoria's public dental sector. 2014 marked Dr Steele's 45th year at RDHM. Dr Steele registered as a dentist in 1966 and completed a Masters in Prosthodontics in 1987. He was appointed as Head of Prosthodontics, Endodontics and Periodontics at the hospital in 2004. Dr Steele was also a Senior Fellow of the Melbourne Dental School at the University of Melbourne.

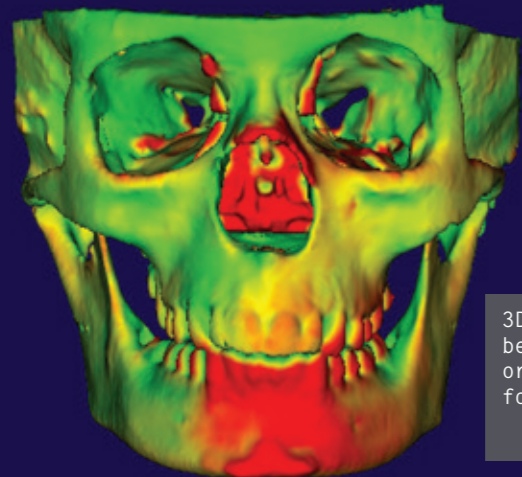
Many within the public dental sector who have worked with Dr Steele can attest to his high quality of care for patients, even those presenting with some of the most challenging cases. Dr Steele has also created a lasting legacy in the dental community, having dedicated

countless hours to teaching and mentoring hundreds of dentists and specialists throughout his career.

Recently, Dental Health Services Victoria honoured him as the 2014 Star of Public Dentistry in the Public Oral Health Awards for his great work over the decades. The dental community has lost a great dentist, mentor and friend – but his legacy will not be forgotten.

MR ROBERT GARTON

Bob was a former staff member of the School of Dental Science from 1994. He provided excellent teaching in Behavioural Science and was also of great assistance to our undergraduate and postgraduate students to whom he offered English language skill development, particularly in thesis writing. Bob remained on staff until the end of 2010 when he took early retirement. D



3D Superimposition before and after orthodontist appliance for Class II correction.



2015 CONTINUING PROFESSIONAL DEVELOPMENT UPDATE

Welcome to the 2015 CPD program update. Since the beginning of 2015 a number of staffing changes have occurred in the CPD Office. Samantha Vassallo La Rosa continues to expertly lead the Office in the role of Program Administrator but we farewell Elena Malgeri, who was a part-time member of the CPD team for the past ten years. We are delighted to welcome Cassie Kearns to the CPD team for 2015. Cassie will assist in the office with the programs that are scheduled on Mondays and Tuesdays and her assistance and friendly demeanour has been invaluable.

The CPD office was pleased to run its first charity lecture during February this year. The "Dentists Against Domestic Violence" lecture was well received with 23 dentists attending the weekend program at MOHTEC. Special thanks to our speakers Dr Samantha Lew (Chair), Dr Simon Wylie, Dr Lisa Crighton, Dr Manjula O'Connor and Dr Rebecca Wong (Convener) – who donated their time, free of charge. The course raised approximately \$2,800 which was donated to the Safe Steps Family Violence Response Centre. Thank you also to our kind sponsor, Medfin Finance.



On Friday 19 June we ran a full day lecture and hands-on program titled "Fibre Reinforced Composite Resin Bridges: A Cost Effective and Conservative Option". The course presenter was Professor Ian Meyers from Brisbane. Participants were able to gain experience with fibre reinforced materials and undertake construction of direct and semi-direct bridges. Material handling and clinical hints and tips were highlighted to assist the participant with ensuring successful patient outcomes.

This first-time program as part of the Melbourne Dental School CPD programs, was extremely well received by all those in attendance. We would like to thank our kind sponsors GC.



Later this year we are running a new full-day lecture program titled "Oral Pathology; Clinical and Diagnostic Dilemmas". The program is an excellent update on current knowledge and practice in diagnostic oral pathology. Contemporary oral pathology has changed significantly over the past decade and this course will be presented by practitioners working on a daily basis in oral pathology, and recognised internationally as leaders in this field. The course will cover the diverse areas of oral pathology, including salivary gland disease, fibro-osseous lesions, dilemma's in diagnosing oral mucosal biopsies, the changing epidemiology and aetiology of oral cancer as well as clinical aspects of potentially malignant oral mucosal disease.

We hope to see you at some of our 2015 CPD events. **D**

*A/Professor Roy Judge
Chair (CPD Program)*

FROM THE DENTAL MUSEUM



The Role of Female Dentists in WWI

By Mike Morgan & Mina Borromeo

THE PRECISE ROLE THAT AUSTRALIAN FEMALE DENTISTS PLAYED IN WW1 IS UNCLEAR. WOMEN HAD ONLY JUST ENTERED THE MALE-DOMINATED DENTAL PROFESSION WHEN THE WAR COMMENCED AND THEIR NUMBER WAS STAGGERINGLY SMALL. HOWEVER THESE WOMEN DENTISTS HAD ALREADY CHOSEN TO ENTER A PROFESSION STRUCTURED IN THIS WAY AND WERE NO DOUBT THE TYPE TO JOIN THE WAR EFFORT.



ABOVE: Fanny Gray.

Up until and including 1916, five women dentists had graduated from The Faculty of Dental Science in Melbourne and were potentially able to work in the theatre of war and related war efforts. There were a further two that graduated in 1918, presumably following armistice.

The first female graduate was Fannie Blanche Innes (she practised as Fannie Gray after her marriage that year) who completed her degree in 1907. There is documented evidence that Fannie was involved in providing care to military personnel. She is the dentist treating a uniformed soldier in this photograph taken during the 1914 -16 period when the Australian College of Dentistry and the Dental Hospital were offering free treatment to the members of the Army with the dental industry supplying materials without charge. She is unlikely to have been the only female dentist providing care in this way.

It is possible that female dentists were close to the front during WW1. However it is more likely that they were employed to provide care in Australia prior to troop departure, to those posted within Australia or for soldiers returning from service overseas. Of course soldiers returning from active service often required ongoing and complex treatment for horrendous wounds received during the bitter conflict. It is extremely likely that women who graduated after the guns ceased in 1918 were treating veterans long into the 20th century. One can imagine that the men serving in WW1, or convalescing afterwards, would have appreciated being cared for by female dentists, not dissimilar to appreciation shown to medical nurses by injured and recuperating soldiers.

Major Kenneth Russell

By Professor Emeritus Henry F Atkinson, MBE

THE LABORATORY TECHNIQUES AND TREATMENT METHODS DEVELOPED DURING WORLD WAR I BY THE AUSTRALIAN DENTAL SURGEON MAJOR KENNETH RUSSELL (1885–1945), BOTH IN FRANCE AND AT THE QUEEN'S HOSPITAL AT SIDCUP IN ENGLAND, SO IMPRESSED THE AUSTRALIAN GOVERNMENT THAT IT COMMISSIONED HIM TO INSTRUCT DENTAL OFFICERS FROM THE MAJOR STATES IN HIS METHODS.

This involved preparing sets of casts, complete with splints and attachments as had been fitted to his more unusual patients. The example here is of articulated casts of an upper and lower jaw, with splints that can be locked together with screws when in correct occlusion to immobilise them, but leaving spaces for the patient to consume liquids or semi-solid food. The lower splint has an attachment for securing it to a head-cap, to give additional support to an unattached fragment of bone. The splints are cast in shell form, which requires a minimum amount of cement to secure and makes removal easier when the treatment is changed or completed.

At the outbreak of hostilities in 1914, the only dental services available to Imperial forces were provided by a unit or regimental medical officer, and were limited to extractions without

local anaesthetic. For this task the medical officer was issued with a leather roll containing up to six pairs of extracting forceps, and troops were fortunate if the doctor had any previous instruction or experience in this form of treatment. According to manufacturers' catalogues of the period, these instruments were all that was considered necessary for a dentist in private practice when setting up a country branch practice. Portable dental chairs were also available; when dismantled for transport these could be packed into a stout wooden box (as shown here) supporting the footrest.

The first dental chairs made available to dentists in the armed forces may have been catalogue

items such as this example made by the S.S. White Dental Manufacturing Company of America. Built of steel and cast iron with stout carpet material covering the seat and backrest, the headrest and back fully adjustable, it requires two men to lift when packed in the box. Transporting it over any distance would have required at least a horse-drawn vehicle. **D**

PICTURED

LEFT: S.S. White Dental Manufacturing Company (USA). Portable dental chair, c. 1910-30, wool, cast iron, nickel-plated steel and wood; 120 × 69 × 150 cm (irregular). 1538. Australian College of Dentistry, Henry Forman Atkinson Dental Museum, University of Melbourne.



LEFT: Volunteers during the works program to replace the Plaques in Galipoli. (picture courtesy gallipolidardanelles.com).

RIGHT: Dr Ross Bastiaan at work.

Anzac Moments

PLAQUES RESTORED

Dr Ross Bastiaan (BDS Sc 1973), along with a team of volunteers including the Royal Australian Air Force, travelled to Gallipoli to replace stolen bronze plaques which he sculpted years ago. These sculptures informed visitors about the history of the most revered ANZAC sites and cemeteries on Gallipoli. The team, including two Vietnam veterans, completed the work in time for the Anzac Day commemoration.

You can see other plaques by Ross closer to home — there are 15 plaques along the Great Ocean Road honouring returned servicemen from WWI who built the Great Ocean Road as a tribute to their mates who died in the war.

CENTENARY LECTURES

The University of Melbourne hosted a series of ANZAC Centenary Lectures 6 May to 27 August, on 20 May I joined a panel presenting "the Medical War". My focus was on the surgical response to severe war injuries and the management of disfiguring facial injuries of returning soldiers.

Trench warfare resulted in the head being more vulnerable than the protected body, this along with more powerful weapons and shrapnel injuries meant unprecedented severe facial trauma with loss of tissue.

The large number of casualties sustained provided learning opportunities, New Zealand born Harold Gillies developed techniques instrumental to the Maxillofacial Surgery discipline, staging procedures and developing blood supplies. The surgery and outcomes were well documented with sketches, something we should be cognisant of and continue to do. Our current trainees manage sporadic cases, making their experiences more difficult to 'build' on and thus relying on the studies of others.

Reflecting on the developments since then has been inspiring, it also gave me insight into the psychological impact this kind of trauma has and the difficulties encountered in restoring both function and aesthetics.

Other topics covered on the evening were loss of talent, women in medicine and infection. **D**

By Dr Warren Crossley

At the Museum

Compassion and Courage: Australian Doctors and Dentists in the Great War

To Saturday 30 April 2016 at the Medical History Museum, 2nd Floor, Brownless Biomedical Library

Open 6 days a week (except during University Holidays)
Monday - Fri day 10AM - 5PM
Saturday 1 - 5PM

War precipitates change and discovery in both the medical profession and in the field of dentistry due mainly to necessity and the immediacy of the issues at hand. This exhibition explores the physical injury, disease, chemical warfare and psychological trauma of WWI, the personnel involved and the important medical and dental breakthroughs that were a direct outcome of the war. Drawing on the collections of the Harry Brookes Allen Museum of Anatomy and Pathology, the Henry Forman Atkinson Dental Museum, and the Medical History Museum and other major collections.

museums.mdhs.unimelb.edu.au





JOHN KENNETH HARCOURT
OAM, DDSc, FRACDS, FDSRCSEd (Hon),
FICD, FADM, FADI, PFPA.

John was born in 1931, elder twin son of Ken and Marjorie Harcourt of Glen Iris, and was educated at Malvern Church of England Grammar School, Wesley College and the University of Melbourne. He completed his dental degree in December 1953 and worked as a staff dentist for the Dental Hospital of Melbourne until the end of June 1954. He was invited by Professor Henry Atkinson to join the teaching staff of the Department of Dental Prosthetics of the Australian College of Dentistry in July 1954. In 1963 he was promoted to Senior Lecturer when the Faculty of Dental Science moved from Spring Street to the Haymarket site and the School of Dental Science came under the University of Melbourne with the winding up of the Australian College of Dentistry

He completed a Masters degree in Dental Materials and Dental Prosthetics in 1956 and a Doctor of Dental Science degree in 1967 with a thesis on the The microradiographic structure of human enamel and dentine. In 1965 he became an Inaugural Fellow of the newly formed Australian College of Dentists (now Royal Australasian College of Dental Surgeons (RACDS)) and in 1998 he was inducted as an Honorary Fellow in Dental Surgery of the Royal College of Surgeons of Edinburgh. He continued to teach both dental prosthetics and oral histology and embryology until a two year period of study leave from September 1967 to 1969 which was spent in the Department of Biological Materials at Northwestern University in Chicago, Illinois. During this time away he collaborated with Drs Evan Greener and Eugene Lautenschlager in various research projects which resulted in several publications and the writing of a dental materials textbook Materials Science in Dentistry which was published in 1972.

On his return to Melbourne, he continued to teach both dental prosthetics and oral histology and embryology. In 1974 he was promoted to Reader and in 1990 to Associate Professor and Reader. He returned in 1979 for a further year as a Visiting Professor in the Department of Biological Materials at Northwestern University. During the 1980s he was head of the Department of Restorative Dentistry and in 1991 after returning from six months Study Leave in the Dental Materials Department at the University of Hong Kong Dental School he became Continuing Education Coordinator in the now School of Dental Science which had been incorporated into the Faculty of Medicine. He retired at the end of 1996 but has continued his involvement in teaching as an Honorary Principal Fellow in the University of Melbourne since that time.

In the early 1960s he became involved in the Postgraduate Committee of the Australian Dental Association Victorian Branch (ADAVB) and then followed a time on the ADAVB Council before becoming President in 1975. He was an ADA Federal Councillor from Victoria from 1976 to 1986 and was appointed Editor of the Australian Dental Journal in 1985, a position which he held until 1998. He was a member of the Victorian Regional Committee of the RACDS, was elected to the council of the College in 1982 and became President in 1995 and 1996. He was Editor of the Annals of the Royal Australasian College of Dental Surgeons from 1988 to 2012. He was a member of the Dental Board of Victoria from 1987 to 2000 and was President of the Board in 1995 and 1996.

He was involved in many dental organisations including International Association for Dental Research, Australian and New Zealand Division (Secretary/Treasurer 1971-74, President 1976), the Australian Prosthodontic Society, International Standards Organisation Technical Committee 106 Dentistry and the Committee on Overseas Professional Qualifications Examinations Committee.

He was author or co-author of about 40 published papers and three textbooks and gave presentations at IADR and IADR ANZ scientific meetings.

In 1995 he was awarded a Medal in the Order of Australia for services to dentistry and dental education. He was also an Honorary Life Member of the ADA and ADAVB and an Honorary Fellow of RACDS.

Since retiring from the Dental School in 1996, he has been kept busy as a member of the Probus Club of Melbourne, assisting at the University of the Third Age in Hawthorn and representing the Faculty of Medicine, Dentistry and Health Sciences (dentistry) as a member of the Committee of Convocation of the University of Melbourne. He continues to play tennis each week.

DENTAL ALUMNI NEWSLETTER

Editor: Jennifer Sifonios

Postal Address:
Melbourne Dental School
Faculty of Medicine,
Dentistry and Health Sciences
The University of Melbourne
VICTORIA 3010 AUSTRALIA

Street Address:
Melbourne Dental School
The University of Melbourne
4th Floor, 720 Swanston St
CARLTON 3053 VICTORIA

T: 61 3 9341 1544
F: 61 3 9341 1599
E: sifonios@unimelb.edu.au
www.dent.unimelb.edu.au

Design and production:
Michael Blythe Communication Arts
mbcal@bigpond.com